

# Snohomish United Red G99

Snohomish Youth SC

Snohomish, WA

G99 total strength=571

attack=0.55 defense=0.37

fall league = NPSL G14D3, NPSL Spr G14D2

alt names used:

Snohomish United Red

Snohomish United Red B

SNOHOMISH YOUTH SOCCER SNOHOMISH

SNOHOMISH YOUTH SOCCER SNOHOMISH

Snohomish United Red- G14

Venues played:

Kent Cornucopia Cup GU14 Gold U14

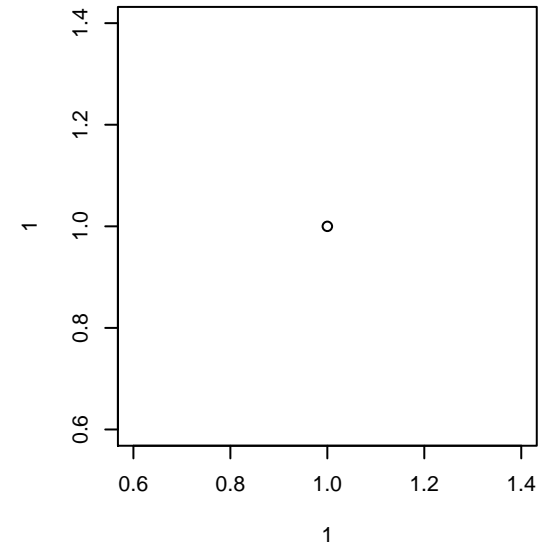
Marysville Strawberry Classic GU14 Group 1

Bigfoot Silver U14

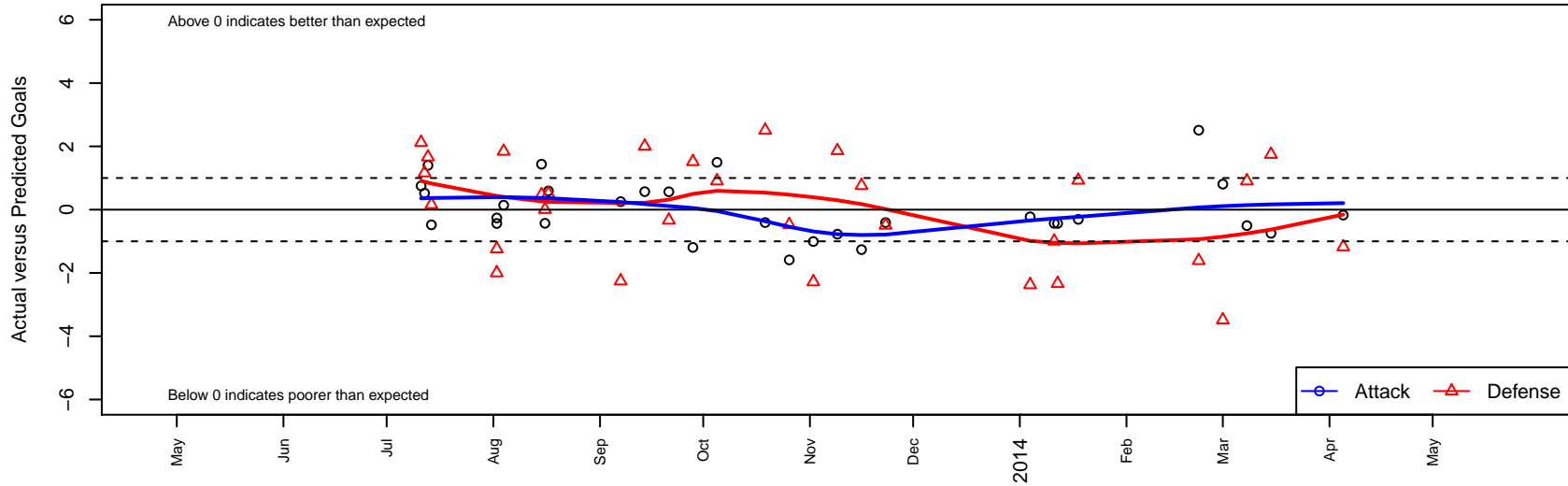
NPSL G14D3

Founders Cup G99

NPSL Spr G14D2



**Snohomish United Red G99**  
**Dots are actual minus expected GF (blue circles) and GA (red triangles).**  
**Blue line is smoothed change in attack strength. Red is smoothed change in defense strength.**



	<b>date</b>	<b>home</b>		<b>away</b>		<b>venue</b>	<b>pred.home</b>	<b>pred.away</b>
16582	2014-04-05	Snohomish United Red G99	1	Firecrackers G99	3	NPSL Spr G14D2	1.17	1.82
16309	2014-03-15	Snohomish United Red G99	0	Whatcom FC Rangers Black G99	0	NPSL Spr G14D2	0.75	1.75
16192	2014-03-08	Mukilteo Rush G99	0	Snohomish United Red G99	2	NPSL Spr G14D2	0.91	2.50
16086	2014-03-01	Snohomish United Red G99	2	BIFC Blue G99	5	NPSL Spr G14D2	1.19	1.51
16008	2014-02-22	Seattle United NE White G99	4	Snohomish United Red G99	3	NPSL Spr G14D2	2.39	0.49
15783	2014-01-18	Seattle United W Blue G99	4	Snohomish United Red G99	0	Founders Cup G99	4.93	0.31
15760	2014-01-12	Snohomish United Red G99	1	MIFC Flames G99	4	Founders Cup G99	1.43	1.67
15755	2014-01-11	Kent United White G99	4	Snohomish United Red G99	0	Founders Cup G99	3.00	0.43
15737	2014-01-04	Snohomish United Red G99	0	Seattle United NE Blue G99	8	Founders Cup G99	0.23	5.63
15529	2013-11-23	Snohomish United Red G99	0	Granite Falls YSC G99	3	NPSL G14D3	0.41	2.51
15405	2013-11-16	Seattle United NE Black G99	0	Snohomish United Red G99	0	NPSL G14D3	0.76	1.26
15259	2013-11-09	SCORE Patriots G99	1	Snohomish United Red G99	0	NPSL G14D3	2.86	0.77
15072	2013-11-02	Snohomish United Red G99	0	Seattle United Shoreline White G99	4	NPSL G14D3	1.01	1.72
14878	2013-10-26	Storm King G99	1	Snohomish United Red G99	0	NPSL G14D3	0.53	1.59
14692	2013-10-19	Granite Falls YSC G99	0	Snohomish United Red G99	0	NPSL G14D3	2.51	0.41
14274	2013-10-05	Snohomish United Red G99	4	Mukilteo Rush G99	0	NPSL G14D3	2.50	0.91
14048	2013-09-28	BIFC Blue G99	0	Snohomish United Red G99	0	NPSL G14D3	1.51	1.19
13814	2013-09-21	Snohomish United Red G99	2	MIFC Flames G99	2	NPSL G14D3	1.43	1.67
13601	2013-09-14	Snohomish United Red G99	1	Kent United White G99	1	NPSL G14D3	0.43	3.00
13392	2013-09-07	Whatcom FC Rangers Black G99	4	Snohomish United Red G99	1	NPSL G14D3	1.75	0.75
13031	2013-08-17	Snohomish United Red G99	1	Granite Falls YSC G99	2	Bigfoot Silver U14	0.41	2.51
12987	2013-08-16	Kent United White G99	3	Snohomish United Red G99	0	Bigfoot Silver U14	3.00	0.43
12973	2013-08-15	MVP Marauders White G99	0	Snohomish United Red G99	3	Bigfoot Silver U14	0.47	1.56
12803	2013-08-04	Stingrays G99	1	Snohomish United Red G99	1	Marysville Strawberry Classic GU14 Group 1	2.84	0.86
12684	2013-08-02	Seattle United NE Black G99	2	Snohomish United Red G99	1	Marysville Strawberry Classic GU14 Group 1	0.76	1.26
12688	2013-08-02	Snohomish United Red G99	0	NSC Galaxy G99	5	Marysville Strawberry Classic GU14 Group 1	0.44	3.00
12397	2013-07-14	Snohomish United Red G99	0	Lake Hills Infinity G99	2	Kent Cornucopia Cup GU14 Gold U14	0.48	2.16
12360	2013-07-13	Snohomish United Red G99	2	WA Rush Azul G99	1	Kent Cornucopia Cup GU14 Gold U14	0.60	2.66

	<b>date</b>	<b>home</b>		<b>away</b>		<b>venue</b>	<b>pred.home</b>	<b>pred.away</b>
12326	2013-07-12	Snohomish United Red G99	1	Lake Hills Infinity G99	1	Kent Cornucopia Cup GU14 Gold U14	0.48	2.16
12316	2013-07-11	Kent United Green G99	4	Snohomish United Red G99	1	Kent Cornucopia Cup GU14 Gold U14	6.12	0.25